



Halls' House

In 1823, 45 years after the first fleet, a British settler Henry Hall was granted 3470 acres of land after a familial dispute, in what is now the north-western suburbs of Belconnen, Canberra. He named it 'Charnwood' after his family property in Leicestershire, England. The family of 14 had a homestead on the property, off what is now Shakespeare crescent in Fraser. They are known to have planted now heritage registered olive and Osage orange trees (native to North America) and bred high-class Arabian racing horses. After the Hall family moved away to Yass in 1970, the house, barn and outhouses were demolished, and only the trees remain now.

In 2023, the great-great-great grandson of Henry and Mary hall was granted permission by the ACT heritage council to lead a team to design and build a new 'Hall's' house on the same original homestead site, making use of the creek, and originally planted wind breaking trees. It is to be built in the valley , between the Bicentennial trail and Hall's creek, with road access to Shakespeare Crescent. Its construction should keep the historical significance of the property for the clients growing family as their residence.

**Residential
Site allocated**

**Completed
June 2023**

Softwares used:

Id

Ps



A[®]



View from hill looking into valley of homestead site



Rear of Charnwood house, 1954

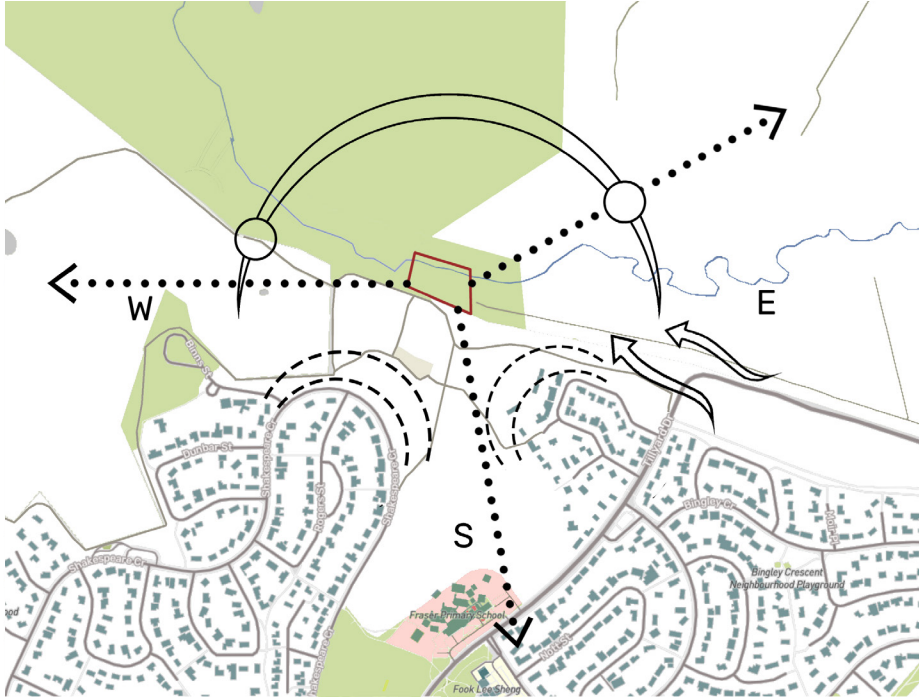


View of charnwood house, looking east 1930

They require a kitchen and dining room big enough for a busy family, a large living room, three bedrooms and an office, and a bathroom/ laundry on the ground floor. The client wants the house and detached one-car garage to use the rich natural ecosystem of large trees, the creek and clover grass field to inform the floor plan and exterior design of the house. With intentions to also protect this existing ecosystem, the design should use inherently sustainable building practices and materials, with all utilities except water not being connected to the suburbs grid. Just as the family values and enjoys the outdoors, the house should reflect a careful attention and application of the site's natural environment.

Satellite image of site [2019]





Site Analysis

- Residential area
- Conservation area
- Agriculture & other
- Education
- Commercial area

0m 100m 200m

Topography



Vegetation

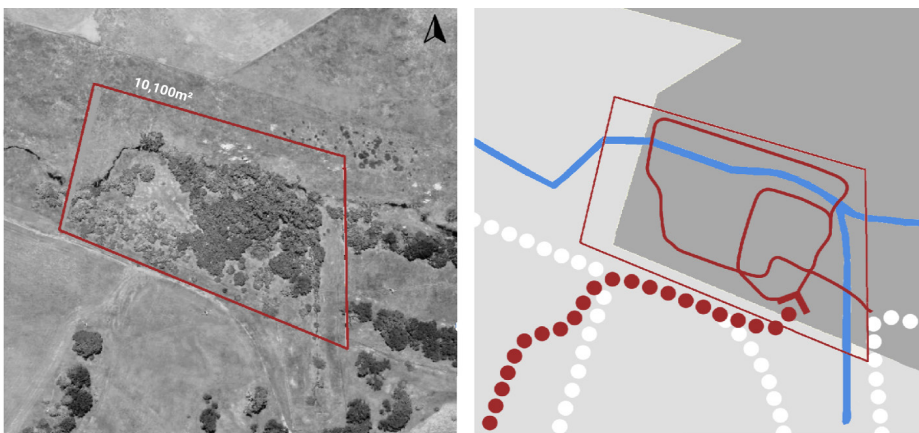
- Oak Trees
- Poplar Trees
- Osage Oranges
- Eucalyptus

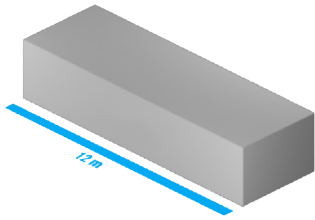
Satellite

0m 40m 80m 120m

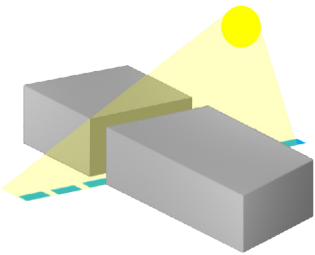
Movement

- Vehicular Paths
- Pedestrian Paths
- Unofficial Paths

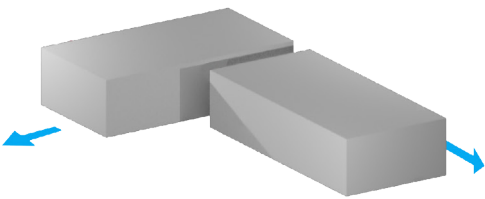




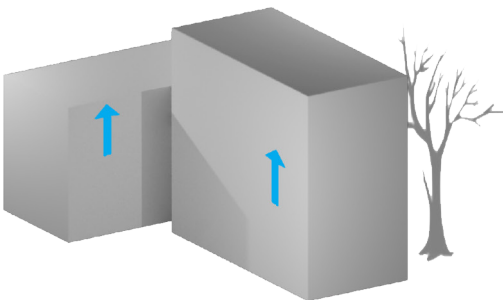
A standard ground floor mass fitting a kitchen, dining and living area at 12 x 4m, all with full length glass door access to the lawn and deck terrace.



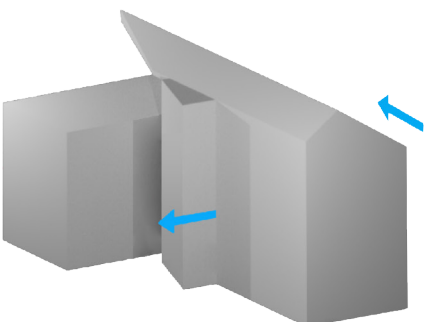
A horizontal cut 1m in width is strewn between the public and private living spaces, allowing sunlight to reach private area windows at sunrise and sunset.



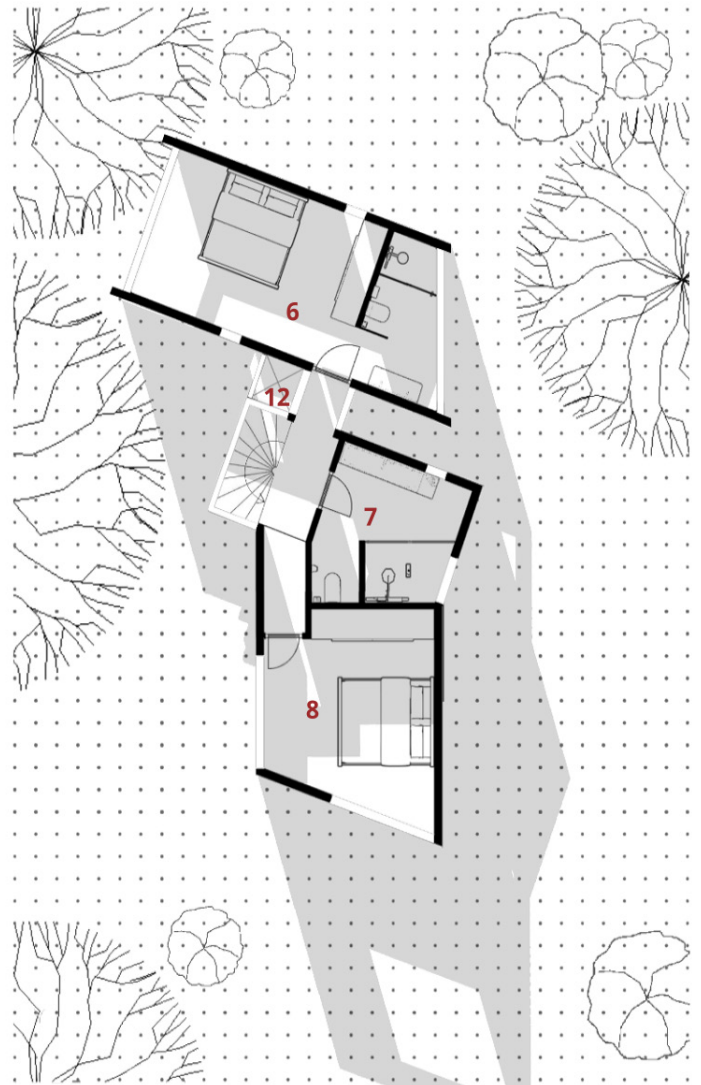
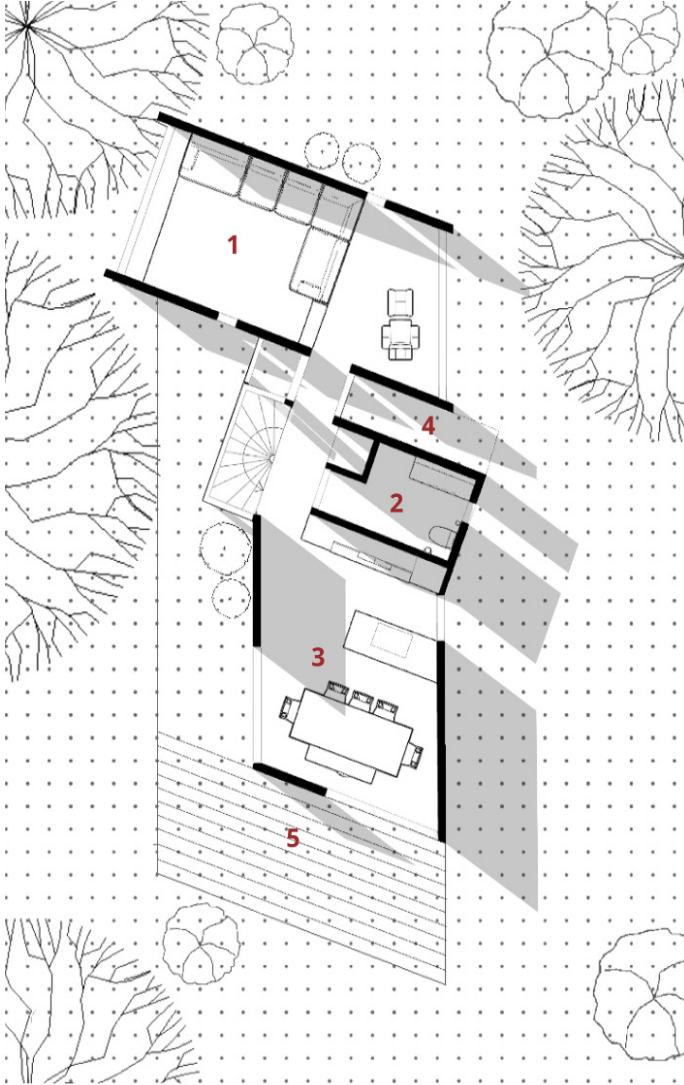
The walls are extended to reach between the large oak and eucalyptus trees , and optimizing visual views to far over the creek and treeline.

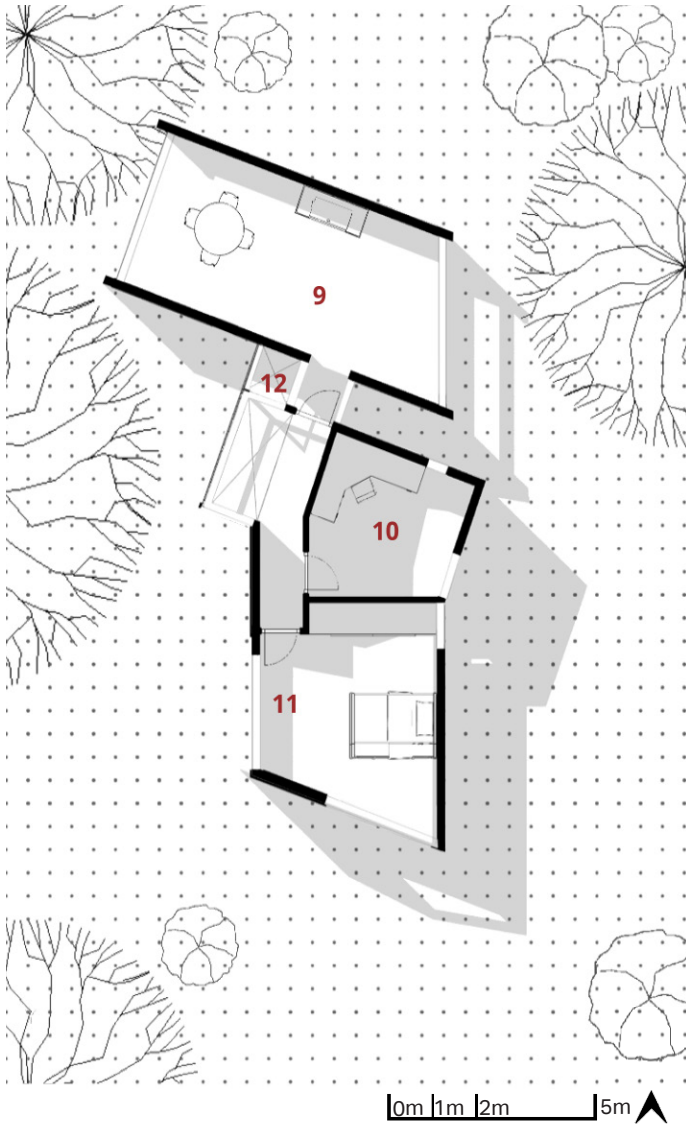


Two more floors are added to compete with the neighboring 20m high trees. These fit three bedrooms, two bathrooms and an office. The norther rooftop is kept open under the tree branches as a second outdoor terrace.



As a glass facade 180°winder staircase extends out west to shield the double door genkan entryway. The saltbox roof extends over the courtyard and provides partial sun and rain cover over the rooftop terrace.

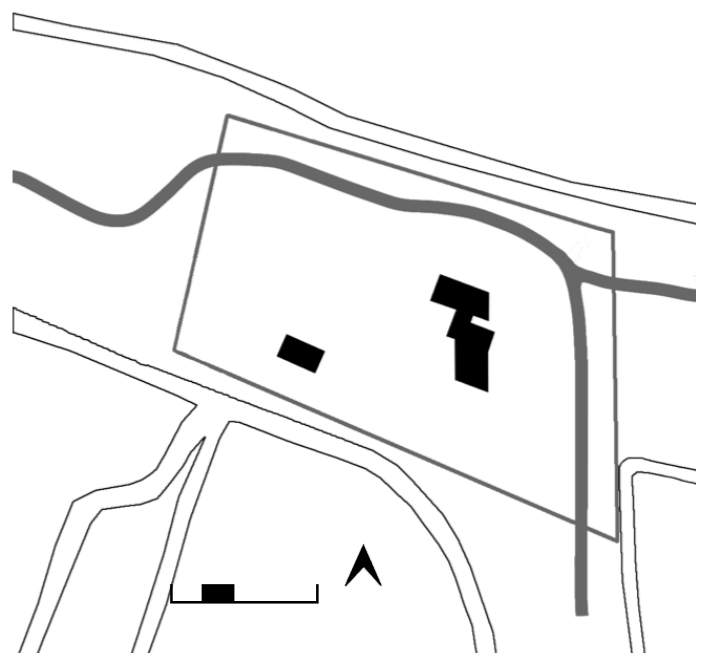




The living room and master bedroom are flooded with light through the west and east glass facades at sunrise and sunset. The full height glass windows encasing the winder staircase provide a view of the close surrounding oak trees from along the entire hallway.

The building has a steel base frame, with precast concrete walls with Colourbond cladding for the upper two floors. The south end of the ground floor has double brick walls, using some of the original 'Canberra' produced bricks used in the Charnwood homestead. All windows are double glazed and the house is fitted with wool insulation throughout the

1. Living room
2. Guest bathroom
3. Kitchen & dining
4. Courtyard
5. Deck terrace
6. Master bedroom & en suite
7. Bathroom
8. Bedroom 1
9. Rooftop terrace
10. Office
11. Bedroom 2
12. Courtyard bridges (open to below)





[Top] Exterior view looking north. [Left] Kitchen view. [Right] Master bedroom view.



Spring elevation looking east



Summer elevation looking north



Autumn elevation looking west



Winter elevation looking south



Halls' House