



# Ethan Lee

Advanced Architecture 2023 | Google Office CBR | 21/06/23

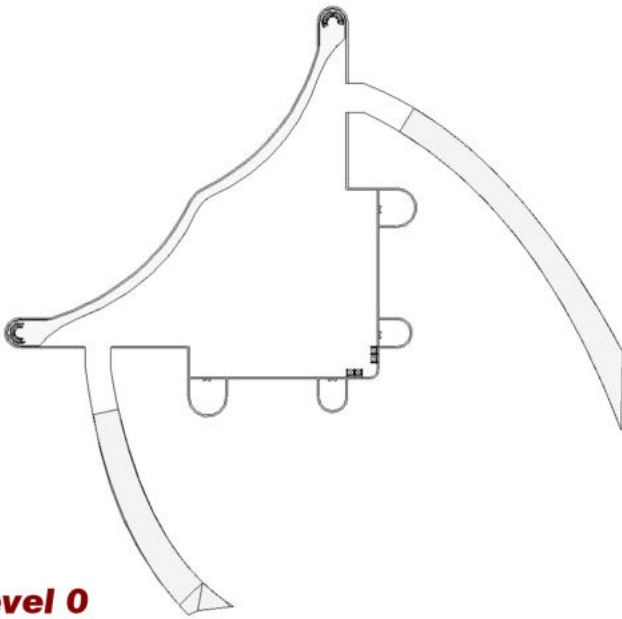
---

My design is an office situated in Majura Park for the client Google and will cater to the needs of approximately 150-200 employees. It takes into consideration the site's surroundings and local environment to maximize energy efficiency and reduce its environmental impact. All necessary facilities are also included such as restrooms, elevators, and ample parking spaces. Furthermore, advanced massing techniques were used through the 3 gliding tent-like roofs along with the wavy brick facade. Finally, to create an accurate representation of the local site, CADMapper was used along with the text tool for the Google signage.

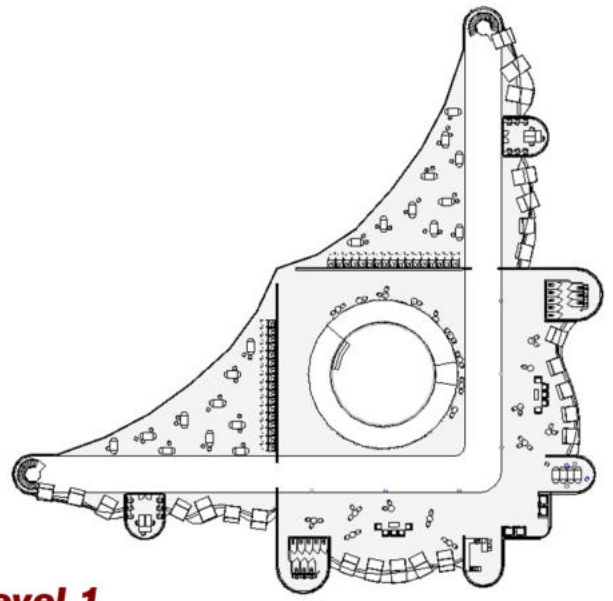
The design incorporates mostly bricks, a traditional material with inherent aesthetic appeal and excellent insulation properties. The main L-shaped form of the design responds to the site's constraints by acting as a barrier against the noise, along with a 40m buffer zone from the road filled with local flora to increase local biodiversity. Beneath the graceful tent-like roofs, the design fosters a harmonious blend of public and private spaces. By employing the technique of compression and release along the circulation path, the impact on the sense of spaciousness is fully maximized. Furthermore, the sloping solar roof and orientation towards the north optimizes natural sunlight and heating while collecting solar energy and maximizing the view of the natural landscape.

Intentionally contrasting windows with the wavy brick facade was used to maximize the effect of both features, introducing a striking juxtaposition between geometric and organic forms. At the heart of the design, a central garden beckons as a focal point, embraced by a gradually curving ramp that encourages movement and facilitates meaningful encounters, all while strengthening the connection with nature. The L-shaped form serves as both circulation and servant spaces, while the tent-like form represents gathering and served spaces. In alignment with Google's values, the overall design offers a variety of open spaces accessible to both employees and the general public, exemplifying transparency and care for the workforce.

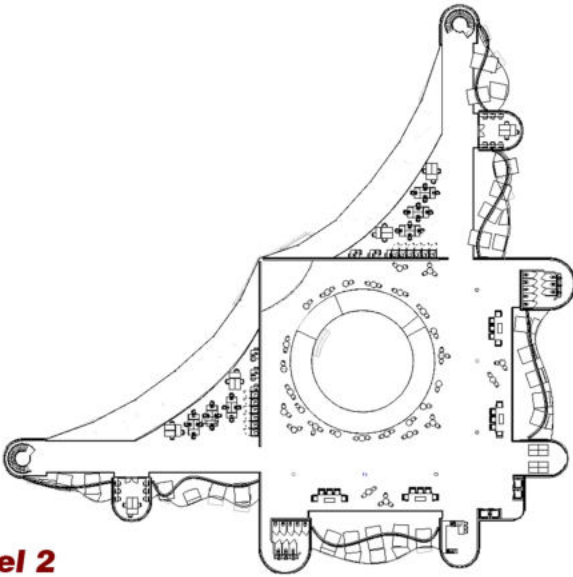
# Design Documents



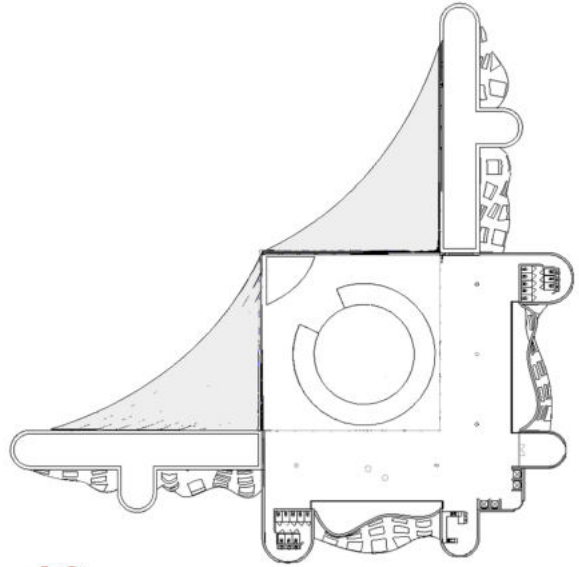
**Level 0**



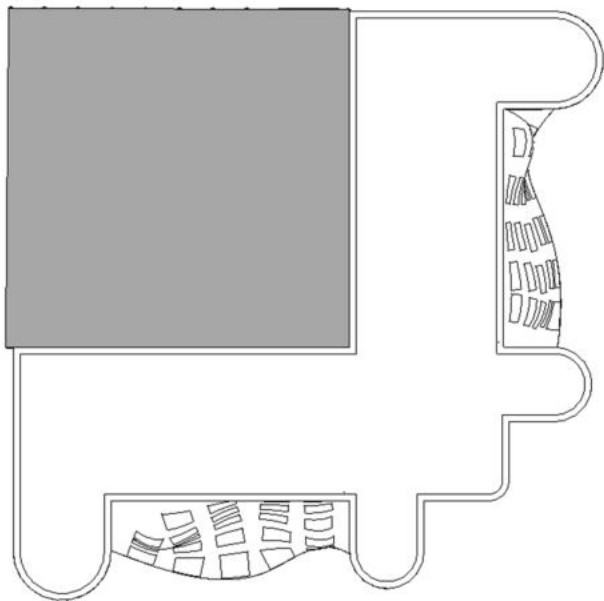
**Level 1**



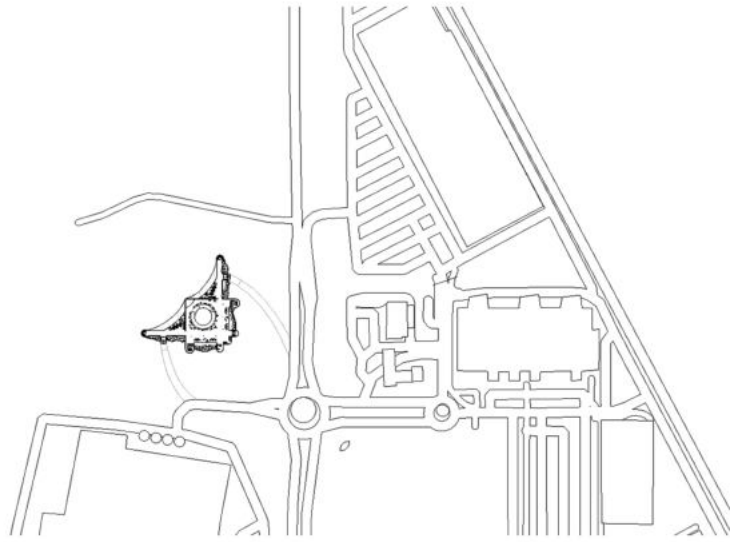
**Level 2**



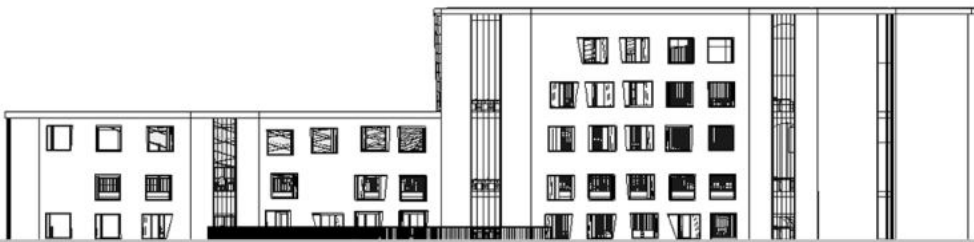
**Level 3**



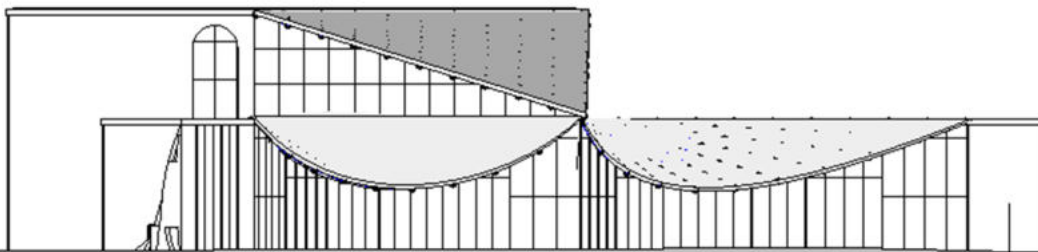
**Level 4**



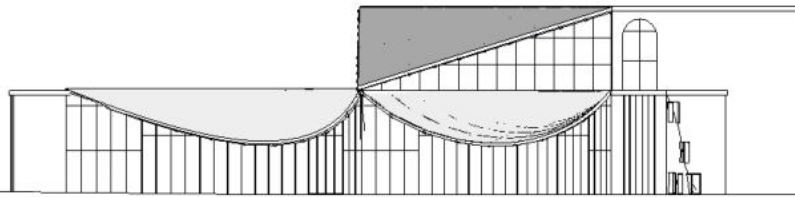
**Site Plan**



**South Elevation**



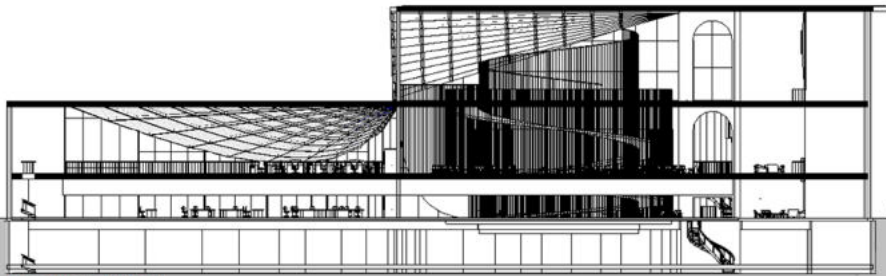
**North Elevation**



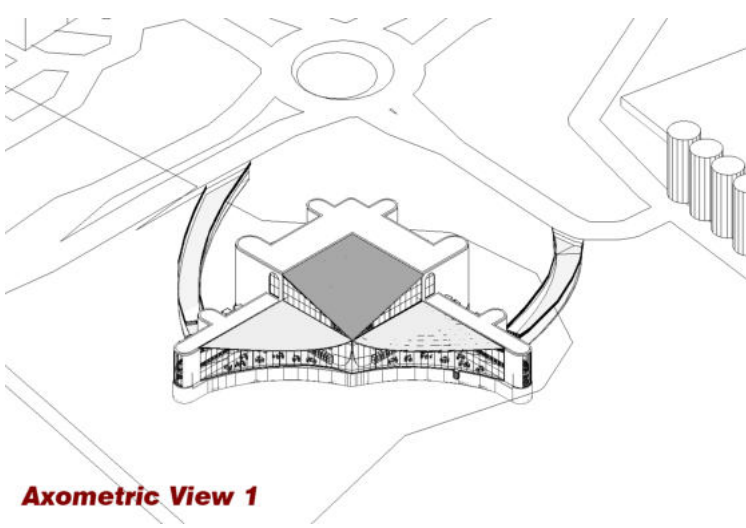
**West Elevation**



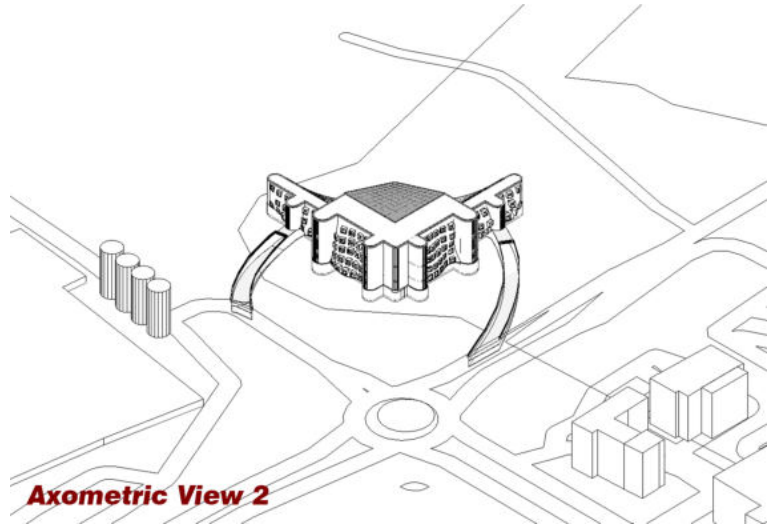
**East Elevation**



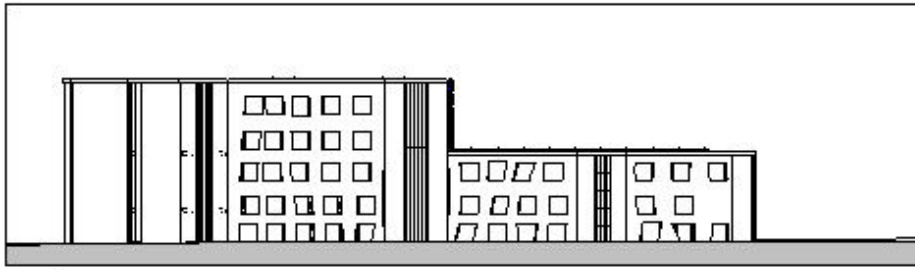
**Section View**



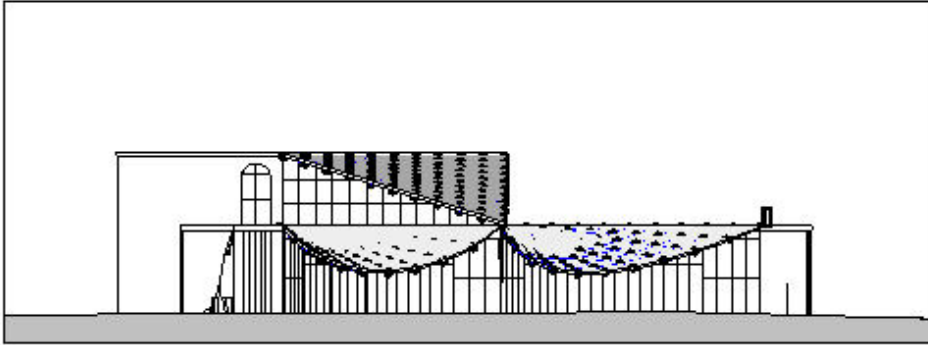
**Axometric View 1**



**Axometric View 2**



① East  
1/200

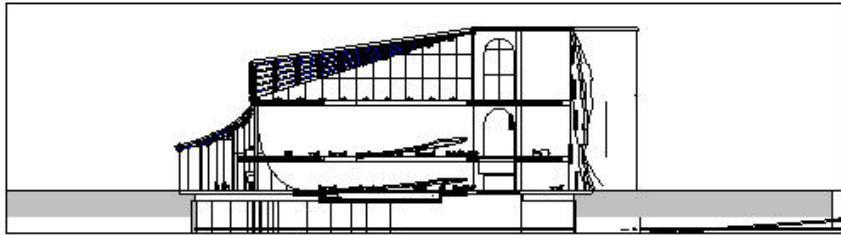


② North  
1/200

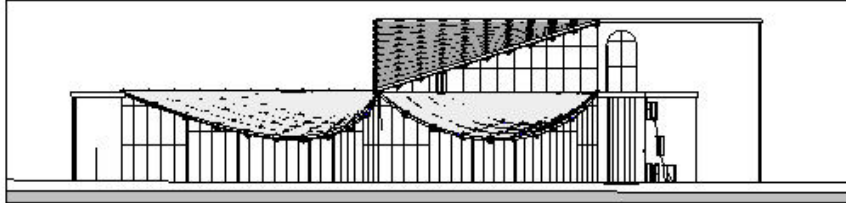
Rev	Description	Date

USER: [ ]  
PROJECT: [ ]  
PROJECT: Google Office CBR  
TITLE: East and North Elevations  
CLIENT: Google  
DRAWN BY: [ ]  
CHECKED BY: [ ]  
DATE: [ ]  
SCALE: [ ]  
SHEET NUMBER: [ ]  
SHEET TOTAL: [ ]

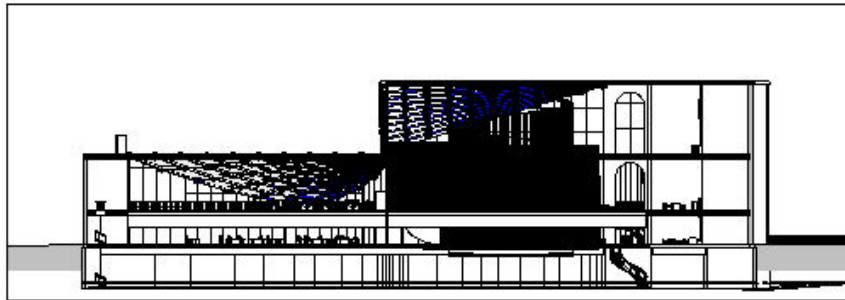
P:\ARCH\74114



① South  
1:200



② West  
1:200



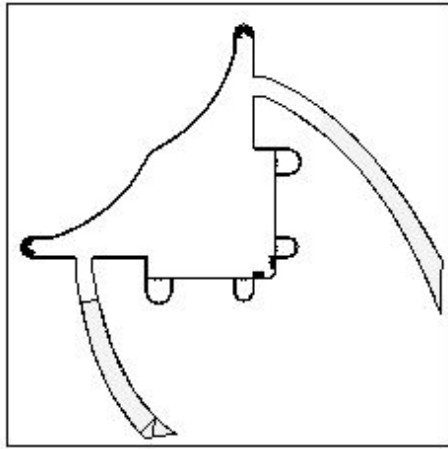
③ Section 1  
1:200

Rev	Description	Date

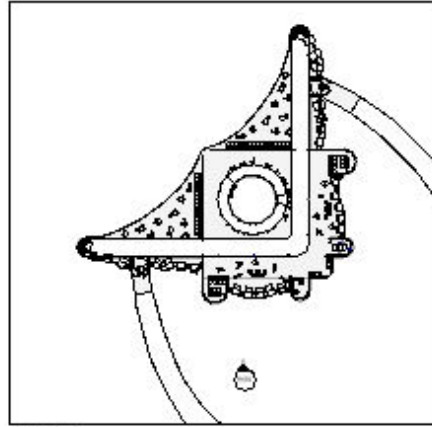
DATE	14/06/2013
SCALE	PURPOSE OF ISSUE
 www.autodesk.com/india	
PROJECT	
Google Office CBR	
TITLE	
South and West Elevations + Section	
CLIENT	
Google	
DRAWN BY	CHECKED BY
Lalit	Chakar
DATE	DATE
14/06/13	04/07/13
SCALE	PROJECT NUMBER
1:200	
PROJECT NUMBER	
A103	

www.autodesk.com

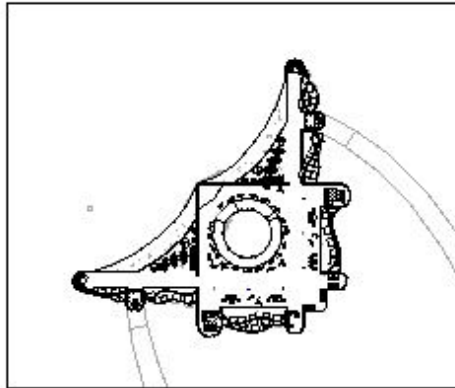




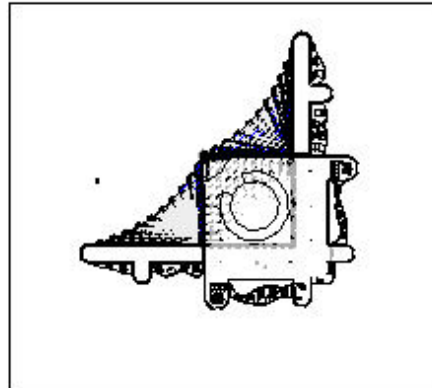
① Level 0  
1:100



② Level 1  
1:100



④ Level 2  
1:100



③ Level 3  
1:100

Rev.	Description	Date

USER:  PROJECT:   
 TITLE:   
**AUTODESK**  
 PROJECT: Google Office CBR  
 TITLE: Floorplans  
 USER: Google  
 PROJECT:  DRAWN BY:   
 CHECKED BY:  DATE:   
 PROJECT NO.:  SHEET NO.:   
 SHEET TOTAL:  TOTAL SHEETS:   
 A102

P-000001-01-01

# Additional Renderings

