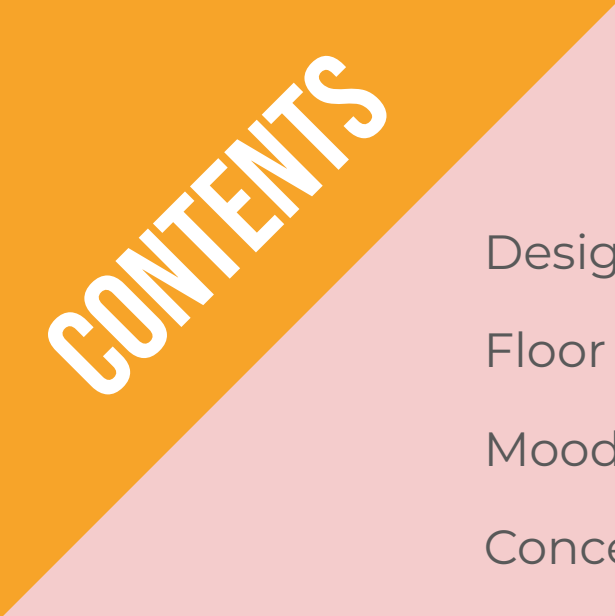


# INTERIOR DESIGN APARTMENT IN STYLE

MAYUMI ESTEVES





# CONTENTS

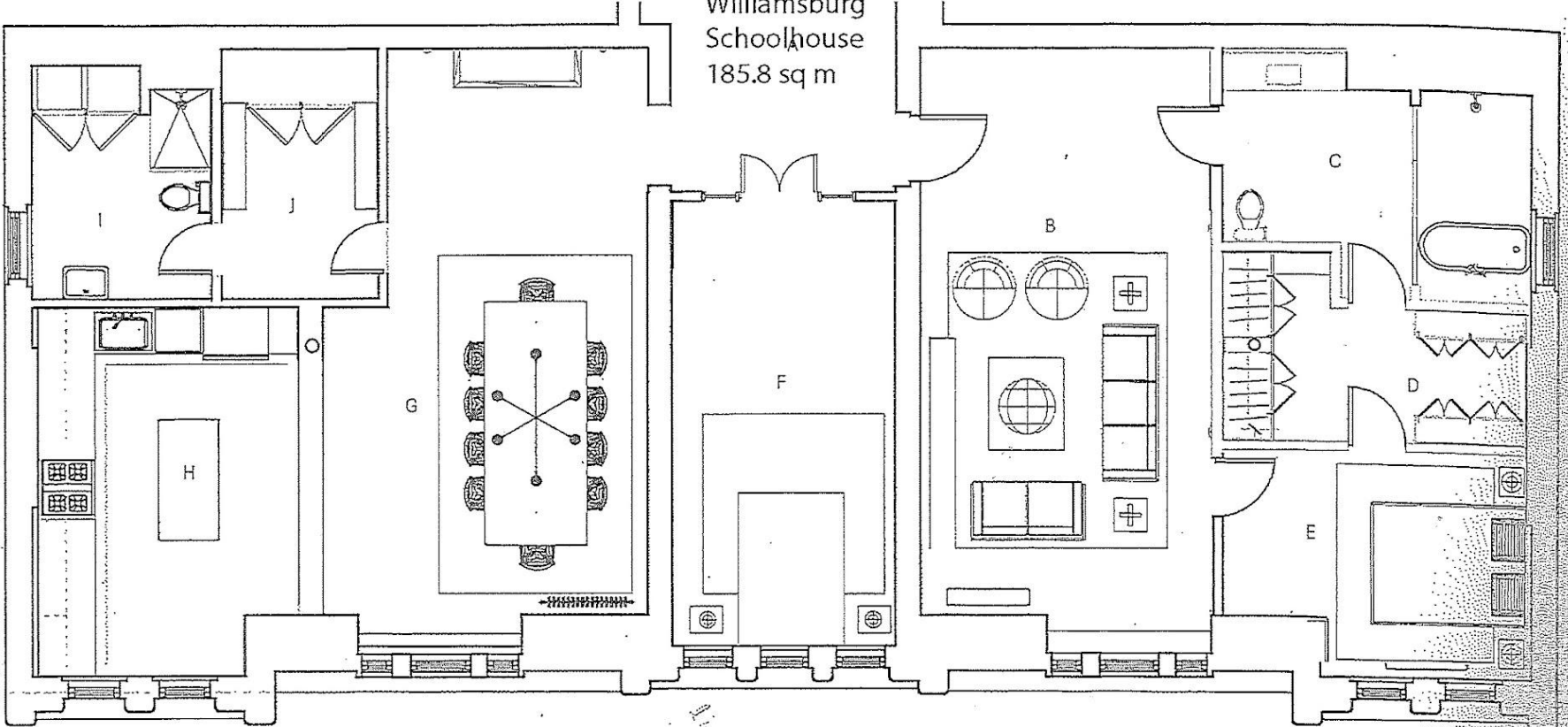
Design Brief -----	3
Floor Plan -----	4
Mood boards -----	5-6
Concept 1 -----	7
Concept 2 -----	8
Design Development -----	9-10
Interior Designer's Statement -----	11
Rationale -----	12

# DESIGN BRIEF

The brief states that we must redesign the interior of the Williamsburg Schoolhouse's living room, bedroom, guest room, dining room and kitchen. The design must conform to the postmodern aesthetic with modifications acceptable to ultimately create a tasteful design. The client does not want changes made to the inner walls and windows structure, but requested to have stained glass windows in one of the rooms. They also stated that each room must have their own bright and bold colour palettes. The end goal of the design is to create a comfortable, sustainable and livable space whilst indulging the client in the postmodern era.

# FLOOR PLAN - WILLIAMSBURG SCHOOLHOUSE

Williamsburg  
Schoolhouse  
185.8 sq m



Floor plan

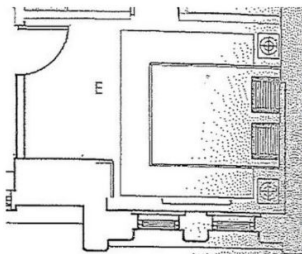
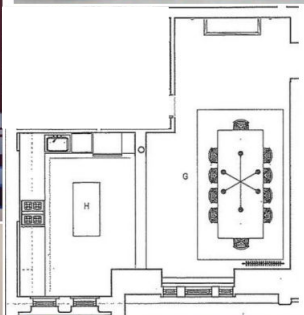
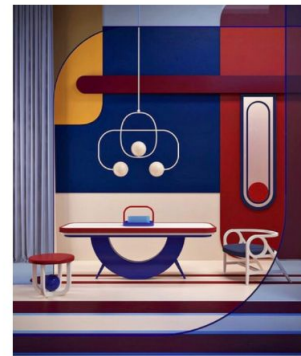
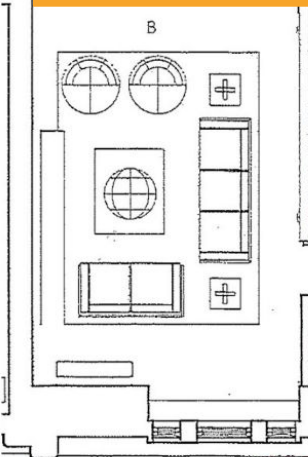
# ERA MOOD BOARD



DOCUMENT LINK

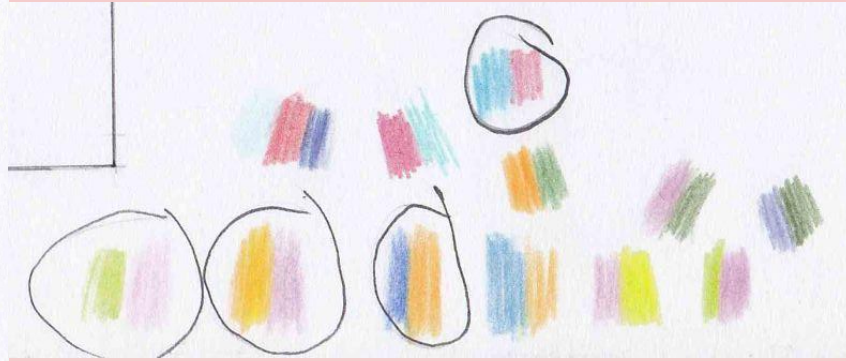
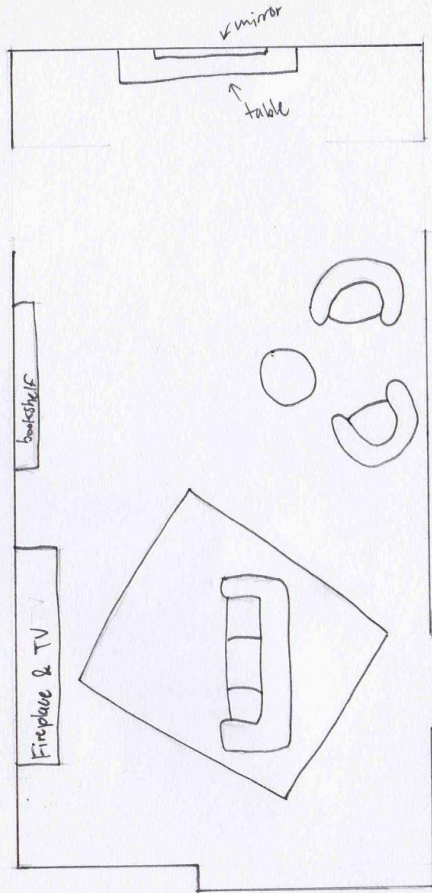
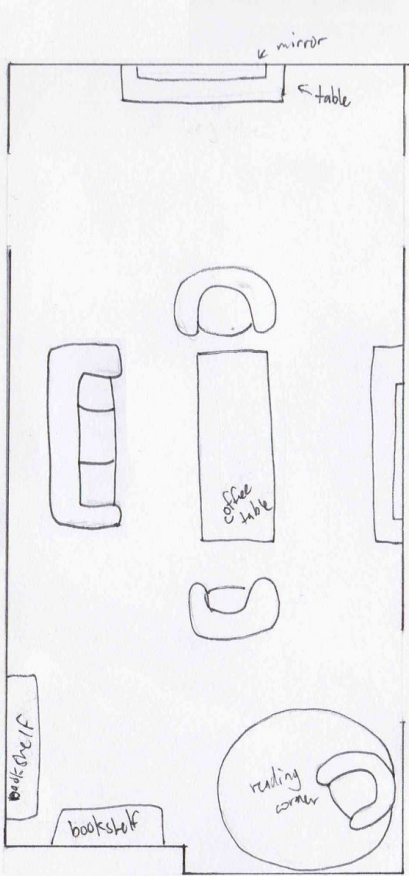
# FURNITURE MOOD BOARD

Schoolhouse  
185.8 sq m

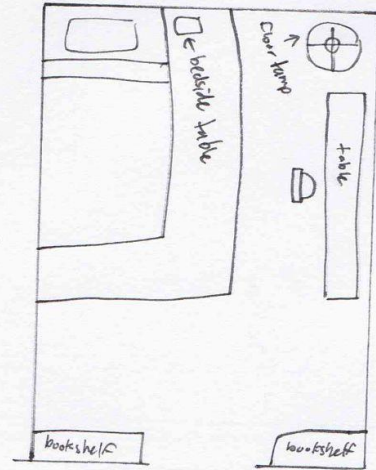
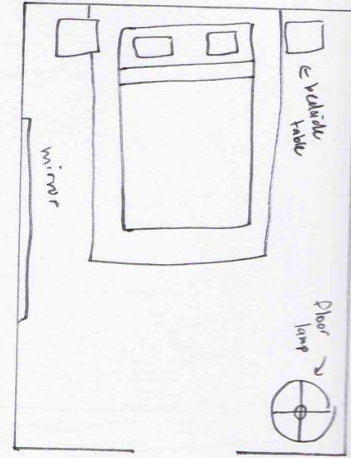
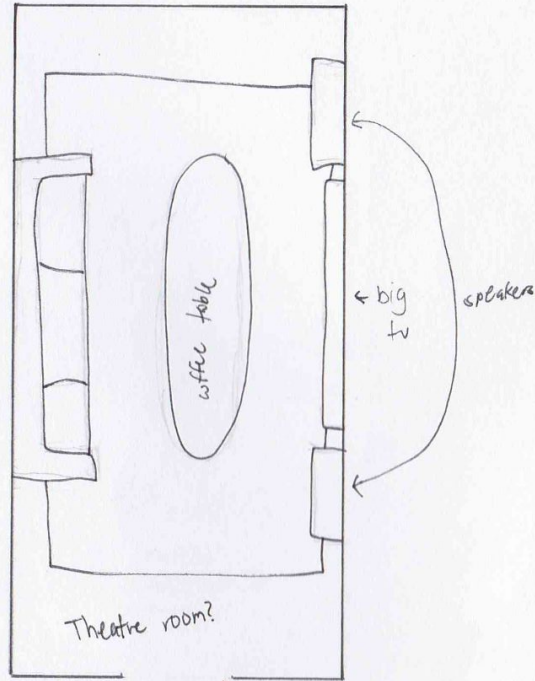
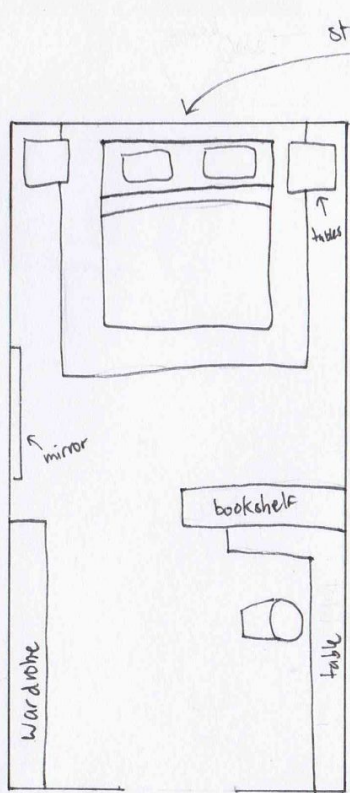


DOCUMENT LINK

# LIVING ROOM CONCEPTS + COLOUR PICKINGS



# BEDROOM AND GUEST ROOM CONCEPTS

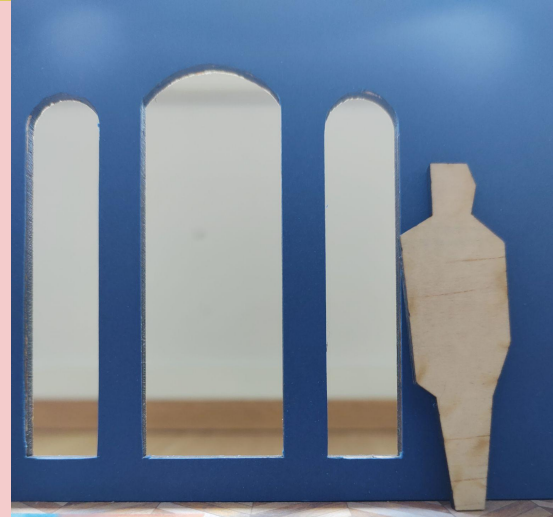




# DESIGN DEVELOPMENT

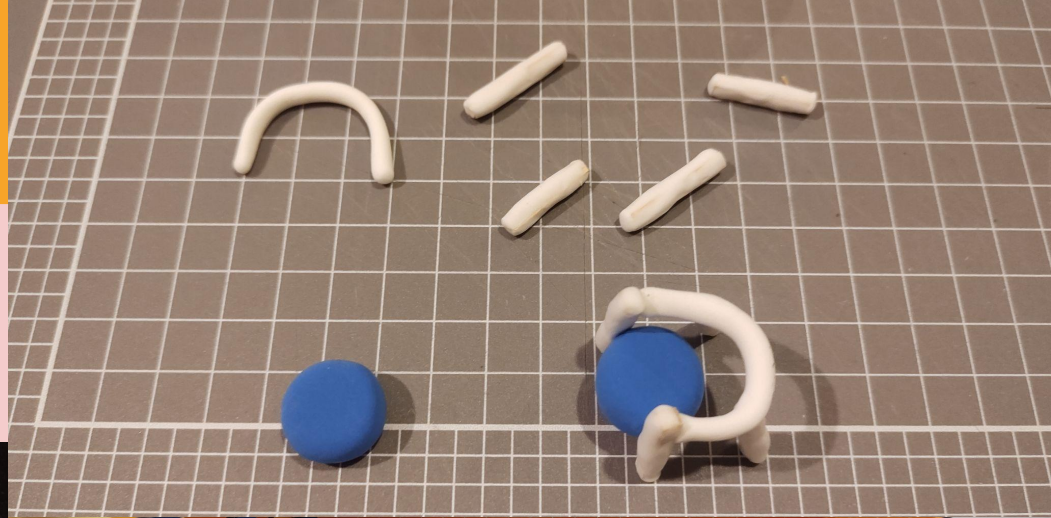
To create the walls, AutoCAD was used to make precision cuts onto plywood. The apartment walls' dimensions in 1:30 scale were measured and drawn into the software for the laser cutter to relay.

Instead of painting, the walls were then glued onto their corresponding coloured card. After colouring, the walls were glued together with a combination of pva glue and hot glue,



# DESIGN DEVELOPMENT

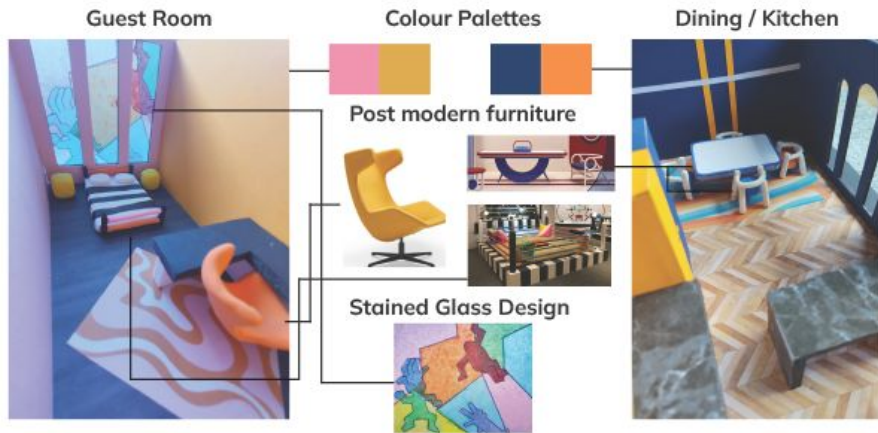
The furniture are mostly made of clay, paper and foam core.



# FINAL DESIGN POSTER

## Interior Design: Apartment in Style

Mayumi Esteves 2022



### Apartment Dimensions

- Bedroom - 3x4m
- Living room - 8x3m
- Guest room - 3x5m
- Dining - 7x3m
- Kitchen - 5x5m

### Final Design

The final design contains two bedrooms, a living room, and a combined dining and kitchen. Each room has different colour palettes, all containing furniture in post modern style to accentuate the era.

# INTERIOR DESIGNER'S STATEMENT

Mayumi Esteves - Apartment in Style

The requirements of the design brief were successfully reached with the interior design resembling the postmodern era and the constraints followed. As the client stated, each room must have its own colour palette and one must contain stained glass windows. The apartment's walls and windows structure must be kept unchanged, which was followed.

Each room successfully has its own colour palette, with each room having two dominant colours. The bedroom had red and blue, the living room had pink and green, the guest room had pink and orange, and the kitchen had blue and orange. These colour palettes were found by picking complementary colours which follow post modern conventions of unconventional ideas. These colours were not only on walls, but were also reflected on the furniture to further emphasise the palette.

As for the stained glass windows, the guest room was chosen for its placement as it positioned the windows in the middle, with the walls almost pointing towards it; veering the attention of the person entering the room straight to the stained glass. The stained glass has a Keith Haring style design as a mural for his work, but also enhances the post modern design, as pop art synergizes well.

To achieve the post modern era look, furniture that are unconventional, experimental and playful were carefully chosen for each room. Each room had at least one post modern-like furniture; such as the bedside tables, bed frames, marshmallow sofa, fireplace, bookshelf, mirrors and the dining table set. This was to mimic the Memphis group's work, as their furniture designs were very influential and became the face of post modern interior design.

Overall the apartment's redesign has met the design brief, followed the client's constraints and has reflected the post modern era successfully.



# RATIONALE/SCRIPT FOR NARRATION

