

# RETURN BRIEF

---

My vision for the design is to convey a tranquil ambience and an open space using an earthy colour palette, so that my client can enjoy a relaxed and laid back lifestyle within the comforts of their home. The contemporary and country styles will majorly influence the aesthetic, as these design styles convey a sophisticated and calm space, yet a cosy and casual mood.

In order to connect with the surrounding environment, interior and exterior become one as the atrium accompanied by the encompassing windows are the main focus of the design, the theme of the interior layout in harmony with that of the atrium to create a connected look.

The notable features within my design include:

- Natural colours consisting of both warm and cool tones such as blues, oranges, greens and beiges, that reflects the Byron Bay landscape and culture.
- The majority of materials used will be sustainable such as reclaimed wood, recycled concrete and other durable materials that will be locally sourced.
- Energy efficiency accounted for in the lighting feature within the lounge room as well as other lighting fixtures through the use of LED bulbs.

# COMPETITOR ANALYSIS



The above images encompass a combination of a contemporary and rustic design style through the connections in textures, colours and shapes. The main textures utilised in each design include solid and grainy materials, balanced out by the softness of furniture accents and subtle decorations such as rugs. The amount of space available is enough to move around freely and is amplified by the number of windows to further illuminate the area. A mix of warm and cool colours are used as ocean blues and various shades of brown complement each other. A natural theme running from the materials, lighting and plants are noticeable in the designs. These ranges of aspects will be considered when designing the interior of the Atrium house to 'project a 'relaxed vibe'' that coincides with the client's wants and needs of a comfortable living environment.



# DESIGN AESTHETICS & MATERIALS



7D8D87



B87F45



CBC497

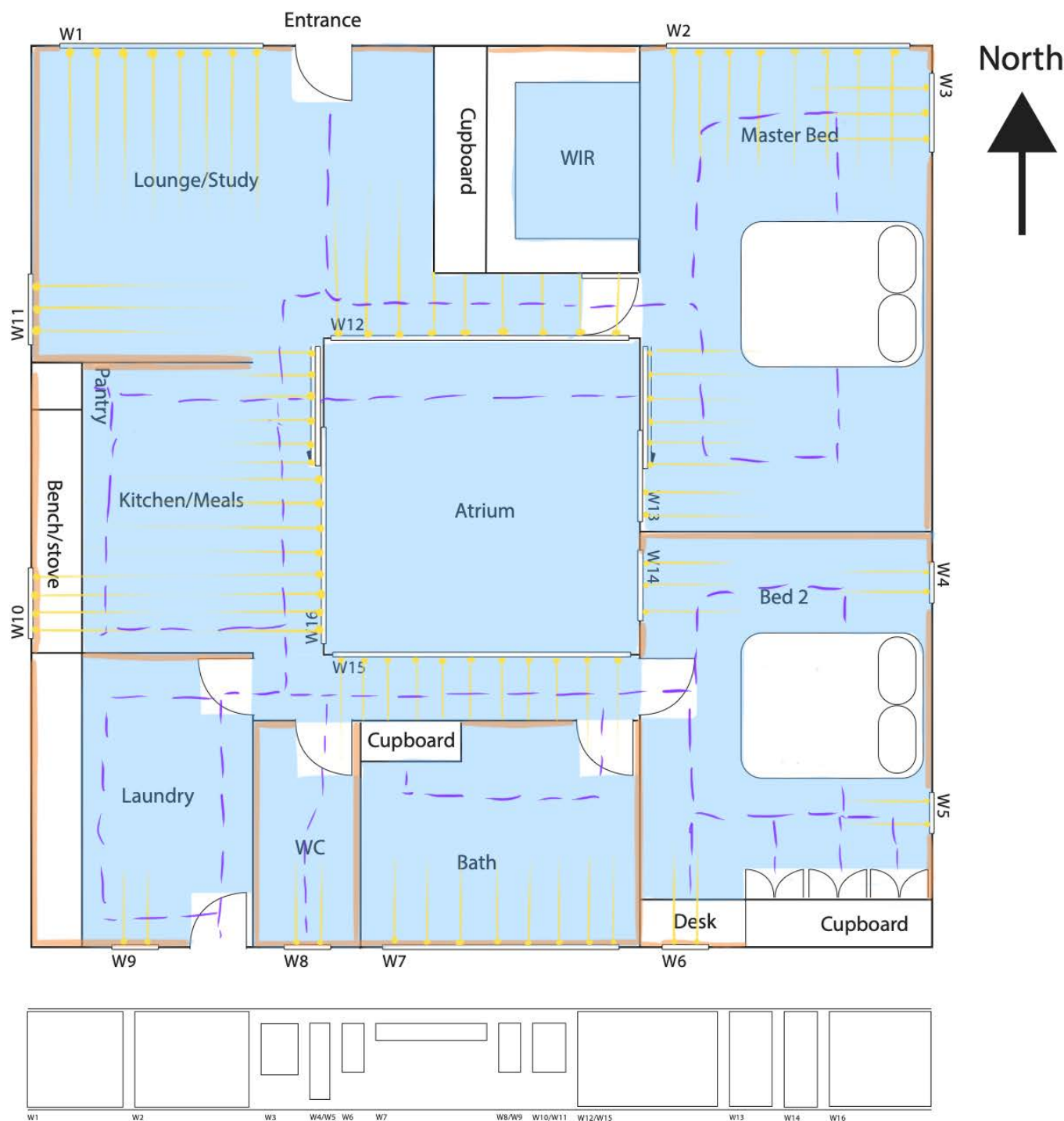


9EB45B



The stylistic influences that I plan to include into my design are that of contemporary combined with the country design style, taking inspiration from Kelly Wearstler's style but toning it down for the purpose of a 'relaxed vibe'. Nature is another major influence on my design theme, involving environmentally sustainable factors as well as consideration for the surrounding landscape that is Byron Bay specifically through the colour palette and materials. Materials that I intend to use are various types of reclaimed wood, marble tiles, concrete, glass and stone. These materials work well together in terms of the design style I am focusing on, the surrounding landscape reflected in the use of these materials whilst accompanying the structural features of the floor plan to provide a connected look. The wood will be the main material used throughout each space of the design, from the flooring to furniture pieces, to convey the country style and environmentally sustainable considerations taken into account.

# SPACE AND LOCATION



## KEYS

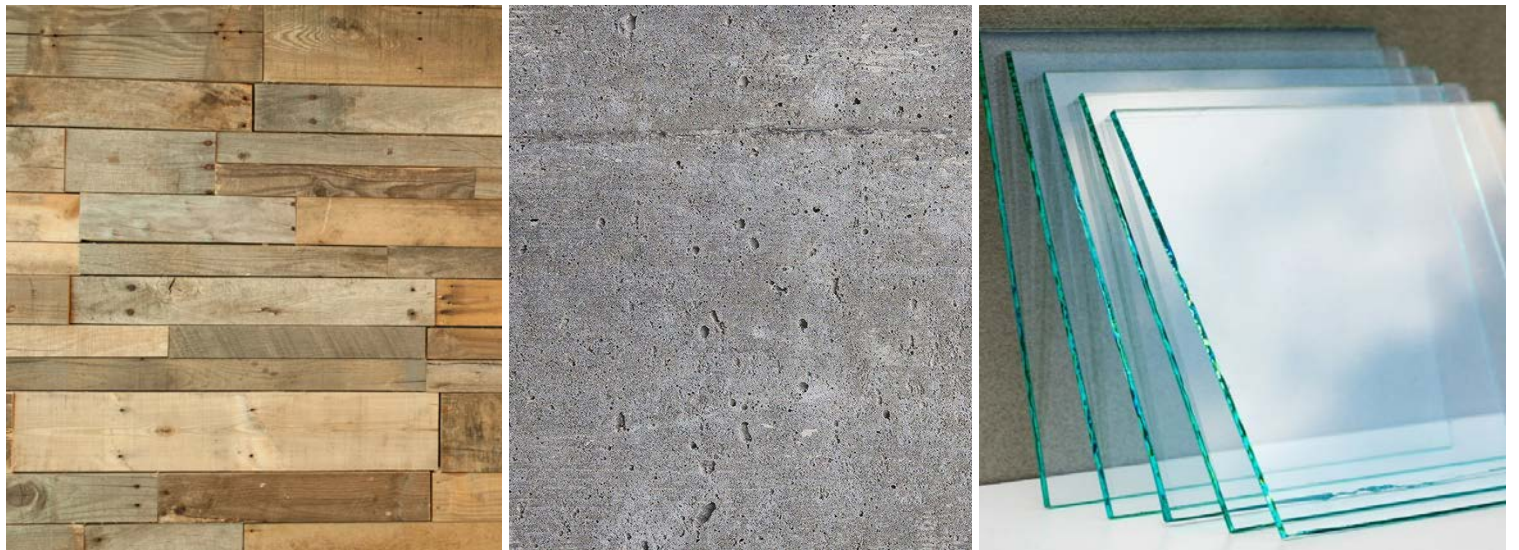
- = available floor space
- = natural light rays
- = available wall space
- = foot traffic

The space will be located in Byron Bay within New South Wales on the Far North Coast, where location-specific considerations including weather, available space, lighting and foot traffic need to be accounted for in the design solution. The weather in Byron Bay is mild and temperate (World Weather & Climate Information, n.d.) with an average temperature of 23°C, and overall high daylight hours (NOAA, 2012), affecting the materials used for main aspects of the design including flooring and walls. The available floor and wall space highlighted on the annotated floor plan gives me a better idea of where furniture or wall pieces can be placed respectively, regarding doors, windows and other built-in features. The natural light rays impact areas of which to focus on placing artificial lighting, specifically where there are less or an absence windows. The foot traffic annotations allow for further understanding of furniture placement, avoiding clutter and providing accessibility in spaces where movement is needed.

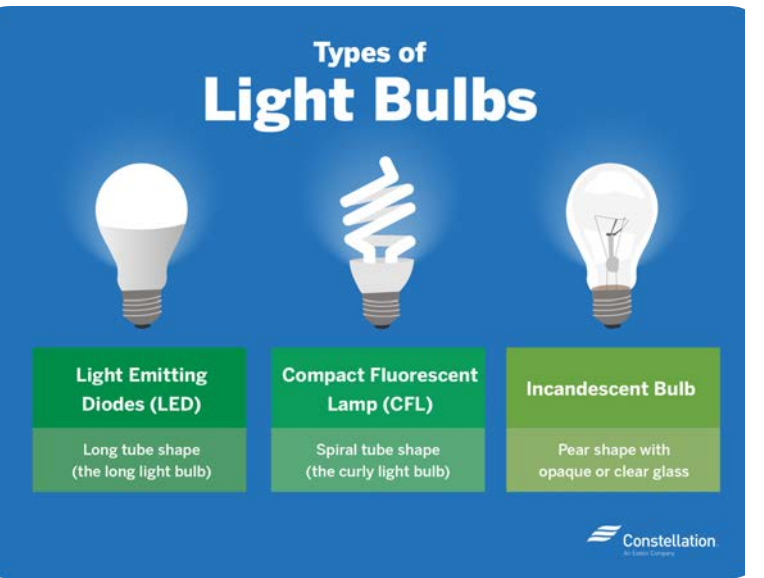
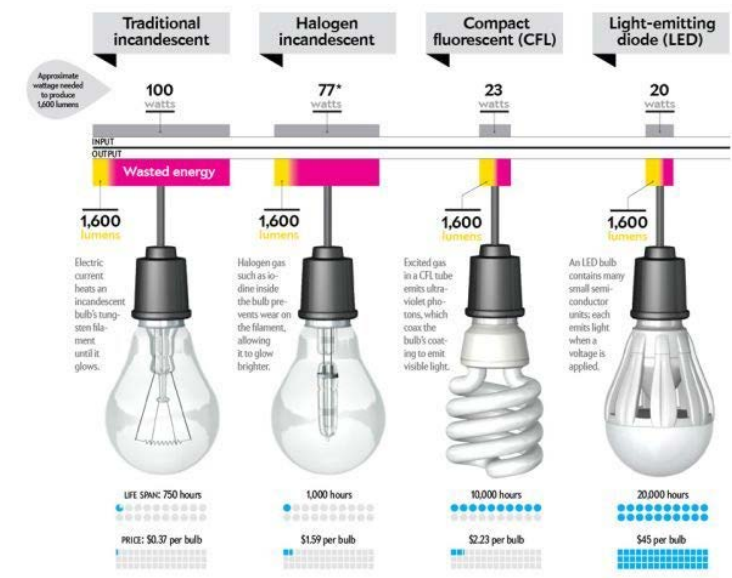


# SUSTAINABILITY

Sustainable features that will be incorporated into my design include the use of reclaimed and eco-friendly materials as well as energy-efficient use of lighting.



Reclaimed wood is reused wood from pre-existing structures, and is environmentally friendly due to its positive impact on waste and deforestation reduction. As more reclaimed wood is used, the demand for new wood is what cuts down trees. It is a renewable source (Elemental Green, n.d.) where fewer hazards are produced from the manufacturing process than that of other materials. Wood along with concrete and glass all have strong durability which makes the design more sustainable in the long-term in terms of minimum material discarded. However, concrete is the third-largest producer of carbon dioxide globally (Ethical Unicorn, 2020), and therefore sustainable ‘green’ concrete will be used which produces less CO2. Examples of sustainable concrete are Ashcrete, blast furnace slag, concrete debris and more (Specify Concrete, 2019).



Energy efficiency is to do with the reduction of energy consumption within households and I plan to incorporate this into my design through lighting. “Lighting accounts for around 10% of electricity usage,” (Energy Rating, n.d.) and this is impacted by the types of bulbs used. Energy-efficient bulbs such as LED and CFL are more preferable to the traditional incandescent bulb, using less electricity for more light and hence having an overall cheaper cost. As well as a consideration for bulb type, there will be minimal use of artificial lighting as the floor plan consists of many windows and open space, allowing for natural light to be the dominant lighting during daylight hours - leading to less consumption in general.

# MOODBOARD



The images, colours and words illustrated on my moodboard above are a clear representation of my vision for the design. The first image on the top depicts a young couple, similar to that of the client, in a relaxed and joyous mood that is reflected in the interior design surrounding them; it is the lifestyle that I envision for the clients as the word 'sanctuary' floats above, taking into account that they 'consider their home to be a sanctuary'. The second image shows a pastel blue and open kitchen with natural light flooding in from the window, conveying the country style that my design will be influenced by, the word 'relax' being the mood emanated by each of these aspects. The bottom image displays a living room where natural plants and energy-efficient lighting are the main focus along with the combination of soft and hard textures along with the mix of contemporary and country. The word 'tranquility' is in bold to describe the overarching ambience of these design choices. The series of colours along the top of the moodboard are what will be incorporated throughout the design, an earthy colour palette inspired by local nature. The textures behind the images include wood, marble and rug that evinces the key materials which will be used in the design to further bring out the contemporary and country aesthetic.



# BIBLIOGRAPHY

---

Boca Do Lobo. (2015). 50 Best Inspiring Interior Design Projects by Kelly Wearstler. Viewed on 3 May 2021. [online] Available at: <https://www.bocadolobo.com/blog/interiors/inspiring-interior-design-projects-kelly-wearstler/24/>.

Décor Aid. (2021). Contemporary Design Style And The Essentials To Master It. Viewed on 3 May 2021. [online] Available at: <https://www.decoraid.com/blog/interior-design-style/contemporary-style/>.

Elemental Green (n.d.) The Pros and Cons of Using Reclaimed Wood. Viewed on 3 May 2021. [online] Available at: <https://elemental.green/the-pros-and-cons-of-using-reclaimed-wood/>.

Energy Rating (n.d.). Lighting. Viewed on 3 May 2021. [online] Available at: <https://www.energyrating.gov.au/products/lighting>.

Energy Rating (2020) Types Of Lighting. Viewed on 3 May 2021. [online] Available at: <https://www.energyrating.gov.au/lighting/types-of-light-bulbs>.

Ethical Unicorn (2020) Is Concrete Sustainable? Here's Why We Need To Talk About Green Building & Sustainable Design. Viewed on 3 May 2021. [online] Available at: <https://ethicalunicorn.com/2020/01/15/is-concrete-sustainable/>.

Home Designing (2019) Beach House Minimalism. Viewed on 3 May 2021. [online] Available at: <http://www.home-designing.com/beach-house-minimalism>.

Jauregui Architects. (n.d.). Hill Country Modern. Viewed on 3 May 2021. [online] Available at: <https://www.jaureguiarchitect.com/project/hill-country-modern/>.

Mark Taylor Design (2015) Transitional Style Country Home. Viewed on 3 May 2021. [online] Available at: <https://marktaylordesign.co.uk/project/transitional-style-country-home/>.

NOAA (2012) National Centers for Environmental Information. Viewed on 3 May 2021. [online] Available at: <https://www.ncdc.noaa.gov/>.

Reggev, K. (n.d.). Modern Homes with Atriums. Viewed on 3 May 2021. [online] Dwell. Available at: <https://www.dwell.com/article/modern-homes-with-atriums-4ff422a2>.

Specify Concrete (2019) Eco-Friendly Alternatives To Traditional Concrete. Viewed on 3 May 2021. [online] Available at: <https://www.specifyconcrete.org/blog/eco-friendly-alternatives-to-traditional-concrete>.

Tarkett (n.d.). Country Interior Design Styles. Viewed on 3 May 2021. [online] Available at: [https://home.tarkett.com/en\\_EU/node/country-interior-design-styles-8843](https://home.tarkett.com/en_EU/node/country-interior-design-styles-8843).

The Spruce. (n.d.). 12 Rustic Bathroom Ideas You Will Love. Viewed on 3 May 2021. [online] Available at: <https://www.thespruce.com/rustic-bathrooms-youll-adore-1975717>.

World Weather & Climate Information (n.d.) Climate in Byron Bay (New South Wales), Australia, Weather & Climate. Viewed on 3 May 2021. [online] Available at: <https://weather-and-climate.com/average-monthly-Rainfall-Temperature-Sunshine.byron-bay,Australia>.